



Product Data Sheet

iCMS-SWG & SWF

Intelligent CL Management System for Switch Products



Overview

iCMS, an intelligent CL Management System (iCMS) for Carelink's network switch/CPE products is the complete, comprehensive and centralized Element Management System (EMS) platform for operation, administration and management (OAM) in highly performance and scalability purpose. This EMS provides mainly for network fault, performance, configuration and security managements for carriers, large enterprises and service providers.

iCMS-SWX is designed with a 3-tier system architecture and with CL's proprietary of multiple plug-in design modules for integrating the 3rd party of network devices by SNMP/or syslog to support the powerful capability of operating, administrating, maintaining and provisioning (OAM & P), all system logs/or events via a feature-rich Graphical User Interface (GUI) operated by a Java-based server and client based software platform under Window Operation System (OS) or Linux Operation System (OS).

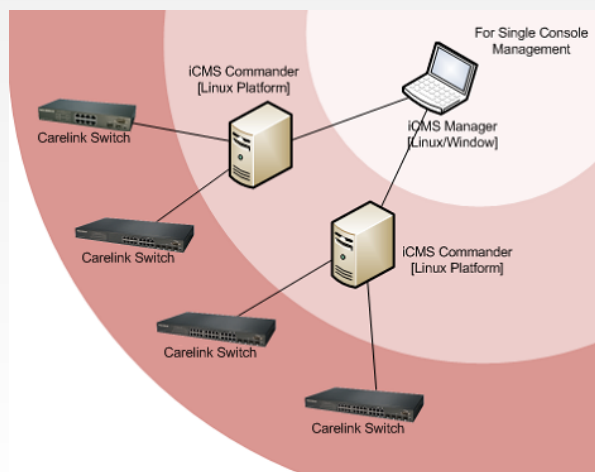
With iCMS-SWX centralized management, All network switches or other network CPEs can be under network service and remote monitored at the NOC for system monitoring, devices configuration, database management, fault and alarm management, and optical link performance monitoring.

Features

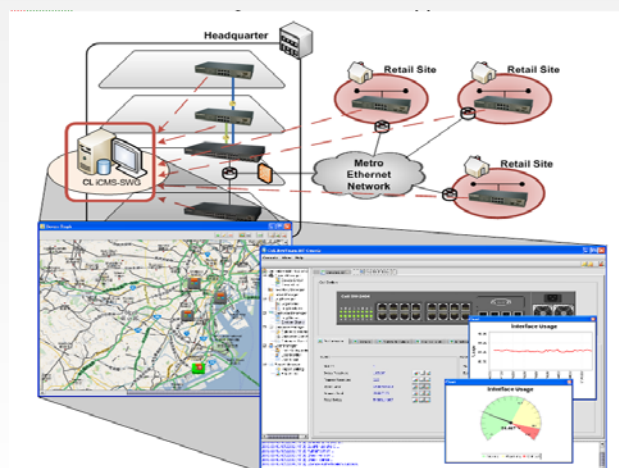
- Complete EMS for Carelink Switch/CPE
- Java-Based Server-Client Platform
- 3-tiered Network Architecture Design
- CL iPlug-in Technology for Integration of SNMP Network Devices
- Support Multi-Platform Capabilities
- Support Network Map Viewing and Inventory Management
- Support Fault, Configuration and Security Management
- Powerful Network Provisioning, Traffic and Performance Monitoring
- Powerful SFP Diagnostic and Optical Link Performance Monitoring
- Powerful Event Tracking System with Alarm Notification

Application

3-Tier System Architecture for iCMS-SWX



iCMS-SWX Centralized Management Platform – Application





Product Data Sheet

Intelligent CL Management System (iCMS-SWX) Specification

System Architecture

- 3-tier network deployment
- Support multi-iCMS Commanders in a network and managed by a single iCMS Manager
- Support external storage system for data storage or backup
- Support external database

NetsVision, iCMS Commander Requirement

Standard Configuration

- OS : Redhat Linux OS with Fedora Core 5/above
- Debian Linux OS with Ubuntu 6.04/above
- Intel Pentium 4 with 2GB RAM or above
- 120G hard disk or above
- FE/GE network interface

High-end Configuration

- OS : Redhat Linux OS with Fedora Core 5/above
- Debian Linux OS with Ubuntu 6.04/above
- Intel Core 2 / Xeon with 4GB RAM
- 250G hard disk or above, support hardware RAID system and 1+1 hardware redundancy
- GE network interface

NetsVision, iCMS Manager Requirement

- OS : Redhat Linux OS, Windows 2000/XP/Vista/7
- Intel Pentium 4 or above with minimum 512MB RAM
- 1G hard disk space
- FE/GE network interface

International Language Support

- English
-

Device Management

- Support device discovery
- Visualize network topology in a geography map
- Multiple devices Software Update
- Support device visualization and drill-down view
- VLAN topology highlight*

Inventory Management

- Manage devices inventory with version, serial number and etc
- Email Notification from license update

Diagnostic Management

- Real time detect link disconnection, optical signal abnormality, system overheat, power failure and system fan failure
- Trigger loopback test between local and remote end point

Performance Management

- Performance and traffic Dashboard for Device/Port and Interface
- Predict potential failure by monitoring optical interface for temperature, transmission power, and supply voltage
- SFP diagnostic and optical link performance

Fault Management

- Event monitoring with custom alarm settings and notification
- Provide a help desk system for administrators to manage the problem ticket
- Store historical alerts in external database
- Send alert through Email
- Export to CSV, PDF, and Text file
- Support various customized reporting formats and styles

Configuration Management

- Full QoS, Security, Port, and VLAN management
- Export real time configuration of network device to external storage
- Push configuration to multiple devices simultaneously
- Synchronize system time of all managed network devices

Database Management

- Scheduled backup and purge database
- Monitor database engine status
- Support external logs storage through ODBC
- Support Oracle, Microsoft SQL Server and MySQL

User Management

- 3 levels accesses - admin, read only and read write
- Restrict user access right down to a single port
- Allow multiple users to login simultaneously
- Record user login/logout information and all configuration action to database

Utilities

- Provide Ping and Trace Route utilities for troubleshooting
- Support Device Telnet tool for remote command line management
- Send announcement to client consoles from server

iPlug-in Integration

- With proprietary technology design
- Unique iPlug-in module support all switches/CPEs products for centralized management purpose

* in product roadmap

Ordering Information

iCMS-SWG Uni-Platform

iCMS, Centralized Management System for Carelink Switches and other CPE Products

Ordering Model : iCMS-SWG-XX, iCMS-SWF-XX

[XX] no. of devices to be supported in the software package

Please contact Carelink for network deployment design and specific ordering

Support Carelink Switch & other CPE Product Models :



CL-SWG0802-SFP



CL-SWG0816-SFP



CL-SWG1604-SFP



CL-SWG2404-SFP



CL-SWF0816-SFP



CL-SWF1608-SFP



CL-SWF0024-SFP